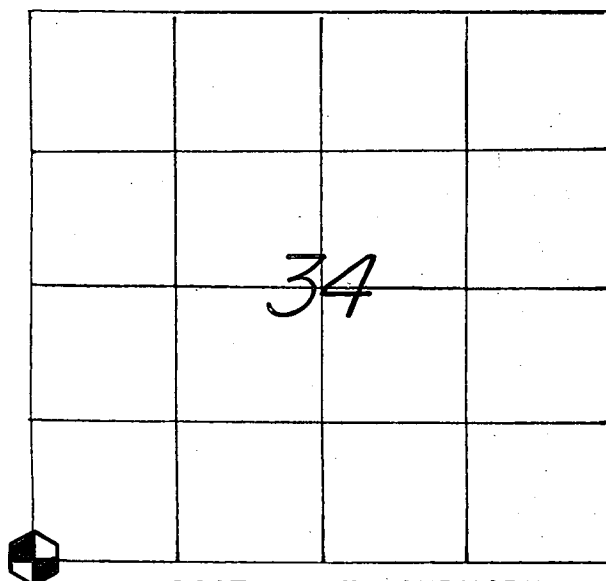


21505330000

## U. S. PUBLIC LAND SURVEY MONUMENT RECORD

SECTION 34 T 15 N, R 5 W, TOWN OF WASHINGTON

LA CROSSE COUNTY



LOCATION OF LANDMARK

CREW: WILLIAM C. JUNG  
 PETER F. FOLLANSBEE  
 DATE: 3/13/2007

## WISCONSIN COORDINATE SYSTEM

North

East

Theta Angle

Horiz. Order

Vert. Order

## TYPE OF LANDMARK

*EXISTING BRASS CAP LUNDE MARKER.*

BEARINGS ARE REFERENCED TO

*ASSUMED NORTH AS PER SECTION DATA.*

Describe any record evidence, monument evidence, testimonial evidence or any other material evidence you considered and whether the monument was found or restored through acceptance of an obliterated evidence location.

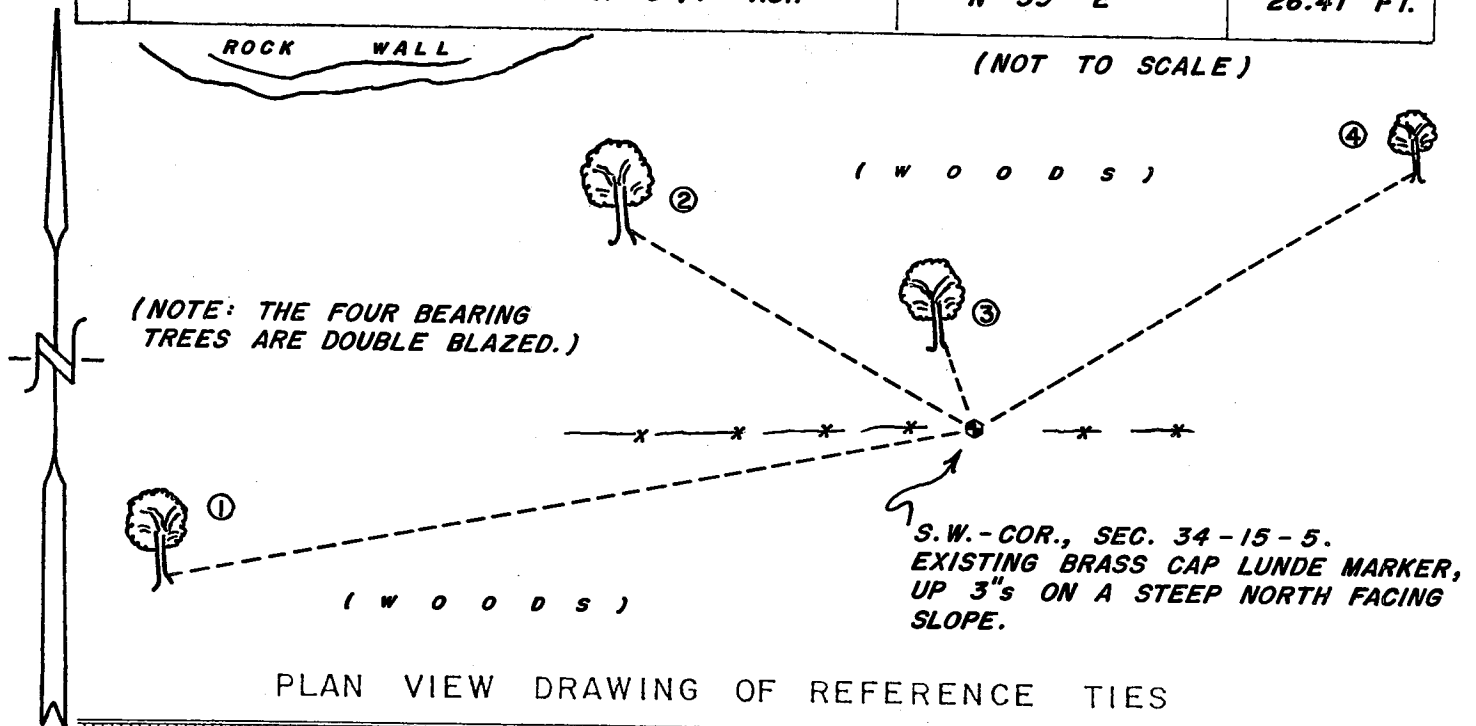
We found the Lunde marker that we set back in 1988. New ties were taken. Our aspen bearing trees from 1988 were all dead, their tops apparently taken off in a storm. The old black oak to the southwest had some storm damage, but is still alive.

Describe or show any material discrepancy between the location of the restored corner and that of the corner previously restored or reestablished.

**NONE KNOWN.**

RECORD OF DURABLE WITNESS MONUMENTS  
Magnetic

NO	DESCRIPTION	BEARING	DISTANCE
1	SET A NAIL IN S.E.-SIDE OF A 9" ASH	S 79° W	42.62 FT.
2	SET A NAIL IN S.W.-SIDE OF A 9-1/2" ASH	N 61° W	20.34 FT.
3	SET A NAIL IN N.E.-SIDE OF AN 8-1/2" ASH	N 20° W	4.60 FT.
4	SET A NAIL IN S.E.-SIDE OF A 5-3/4" ASH	N 59° E	26.41 FT.

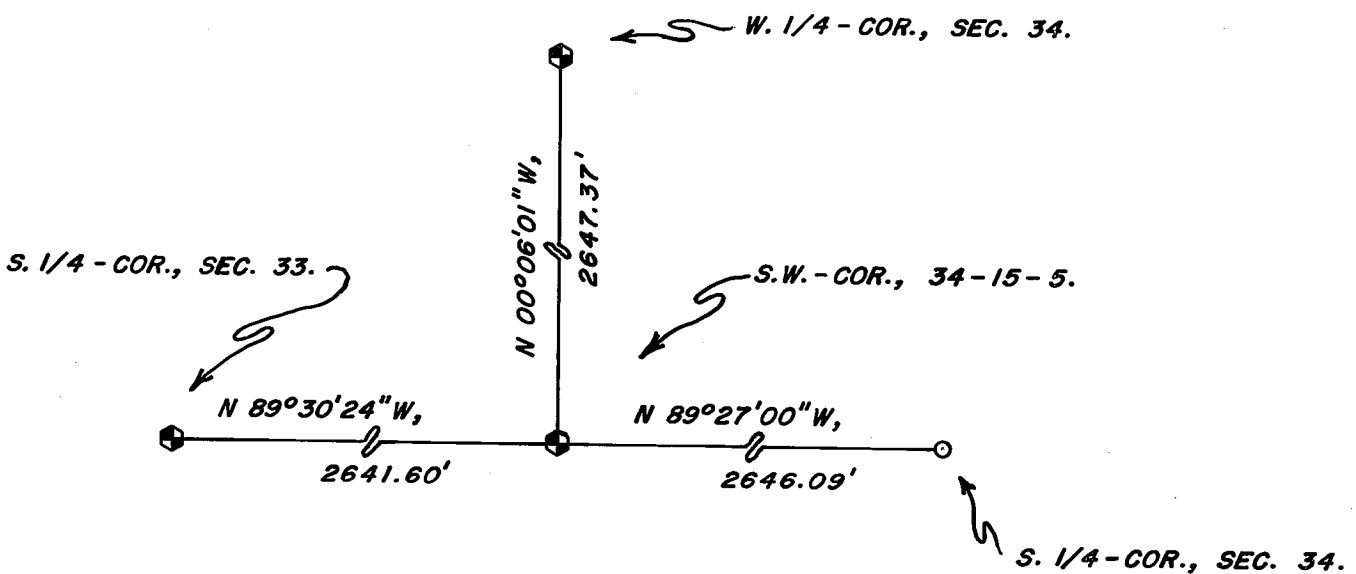


PLAN VIEW DRAWING OF REFERENCE TIES

MAP SHOWING DISTANCE AND DIRECTION TO OTHER PUBLIC LAND SURVEY CORNERS USED FOR REESTABLISHING THE CORNER

(ASSUMED BEARINGS)  
(NOT TO SCALE)

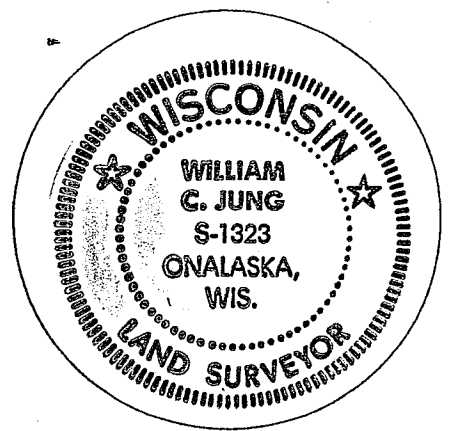
(my 1988 measurements)



I, WILLIAM C. JUNG, COUNTY SURVEYOR  
HEREBY CERTIFY THAT THE CORNER LOCATION SHOWN ON THIS RECORD  
WAS DETERMINED BY ME OR UNDER MY DIRECTION AND CONTROL AND  
THAT THIS U. S. PUBLIC LAND SURVEY MONUMENT RECORD IS CORRECT  
AND COMPLETE TO THE BEST OF MY KNOWLEDGE AND BELIEF.

William C. Jung  
Signature

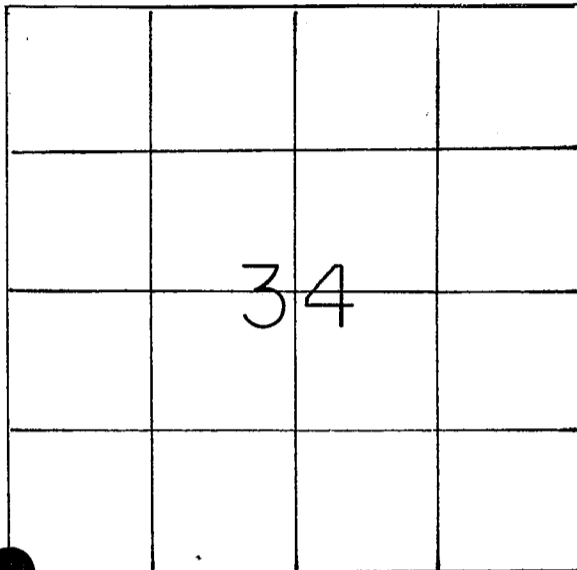
3/22/07  
Date



Seal

## U. S. PUBLIC LAND SURVEY MONUMENT RECORD

SECTION 34 T 15 N, R 5 W, TOWN OF WASHINGTON  
 LA CROSSE COUNTY



LOCATION OF LANDMARK

CREW: WILLIAM C. JUNG  
 PETER F. FOLLANSBEE

FEBRUARY 3, 1988

Describe any record evidence, monument evidence, testimonial evidence or any other material evidence you considered and whether the monument was found or restored through acceptance of an obliterated evidence location.

Wm. Knowler, the old Vernon County Surveyor, was at this corner in 1882, 1883, 1888, and 1889. As I do at all old government corners, I look for evidence of the original government corner. At this corner, I also looked for evidence of Knowler's survey as I did elsewhere along the county line. Knowler called for a 5" black oak, S69<sup>3</sup>/<sub>4</sub><sup>OW</sup>, 38.94' or 17.82'. His notes do not agree on this point and call for both distances. I found a 20" black oak (at the base) that if used as the bearing tree fits the evidence along the county line. At a distance of 17.98 feet the corner falls in the fence and in an area where the wire had been tied off. The sum of 17.82 feet plus \*\*

Describe or show any material discrepancy between the location of the restored corner and that of the corner previously restored or reestablished.

( NONE KNOWN )

\*\* 2.5" equals 18.03 feet. Based on what I saw in the field, it is my opinion that the 20" black oak is Knowler's old witness tree. The bearing does not agree as well as I would like, only about S55<sup>O</sup>W magnetic, but I think that this is the tree. This is on a steep North slope, poor for growing, so the size would be about right. The location of this corner is only 1.33' off of line between the 1/4 corners East and West and fits very well for distance along the county line. The brass capped Lunde marker falls in the old occupied fence.

(I found no other evidence of original or Knowler's bearing trees. The snow was deep, the temperatures were cold, and there was frost in the ground when we set this corner and the others in Section 34.)

WISCONSIN COORDINATE SYSTEM

North

East

Theta Angle

Horiz. Order

Vert. Order

TYPE OF LANDMARK

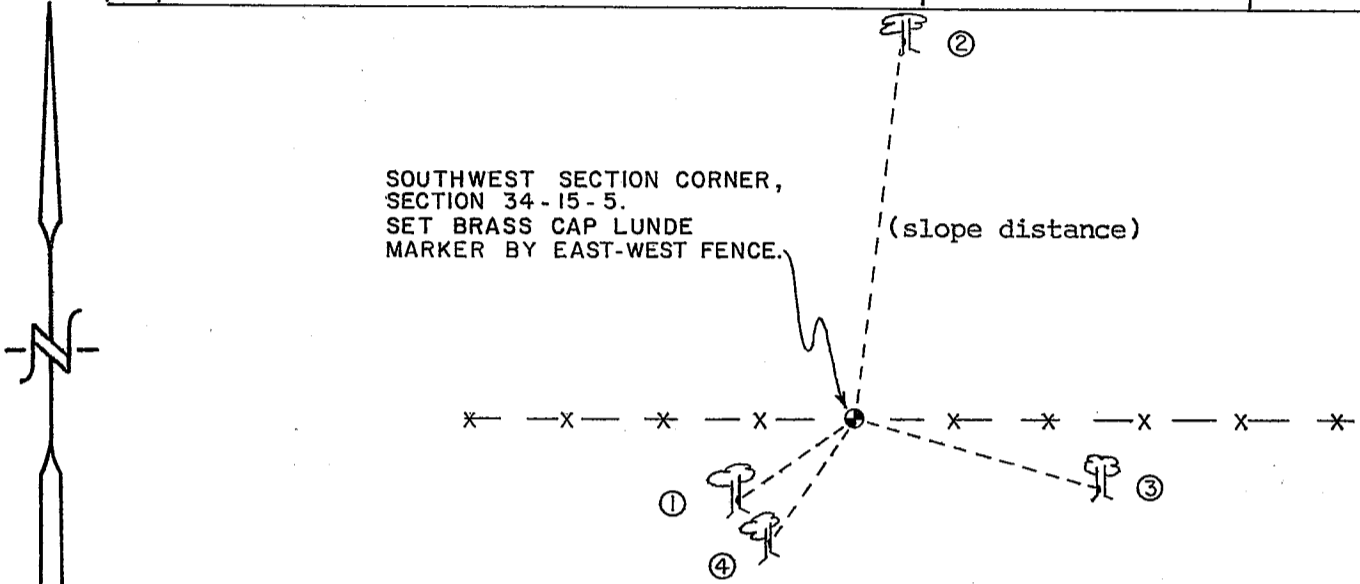
SET BRASS CAP LUNDE MARKER

BEARINGS ARE REFERENCED TO

ASSUMED

RECORD OF DURABLE WITNESS MONUMENTS

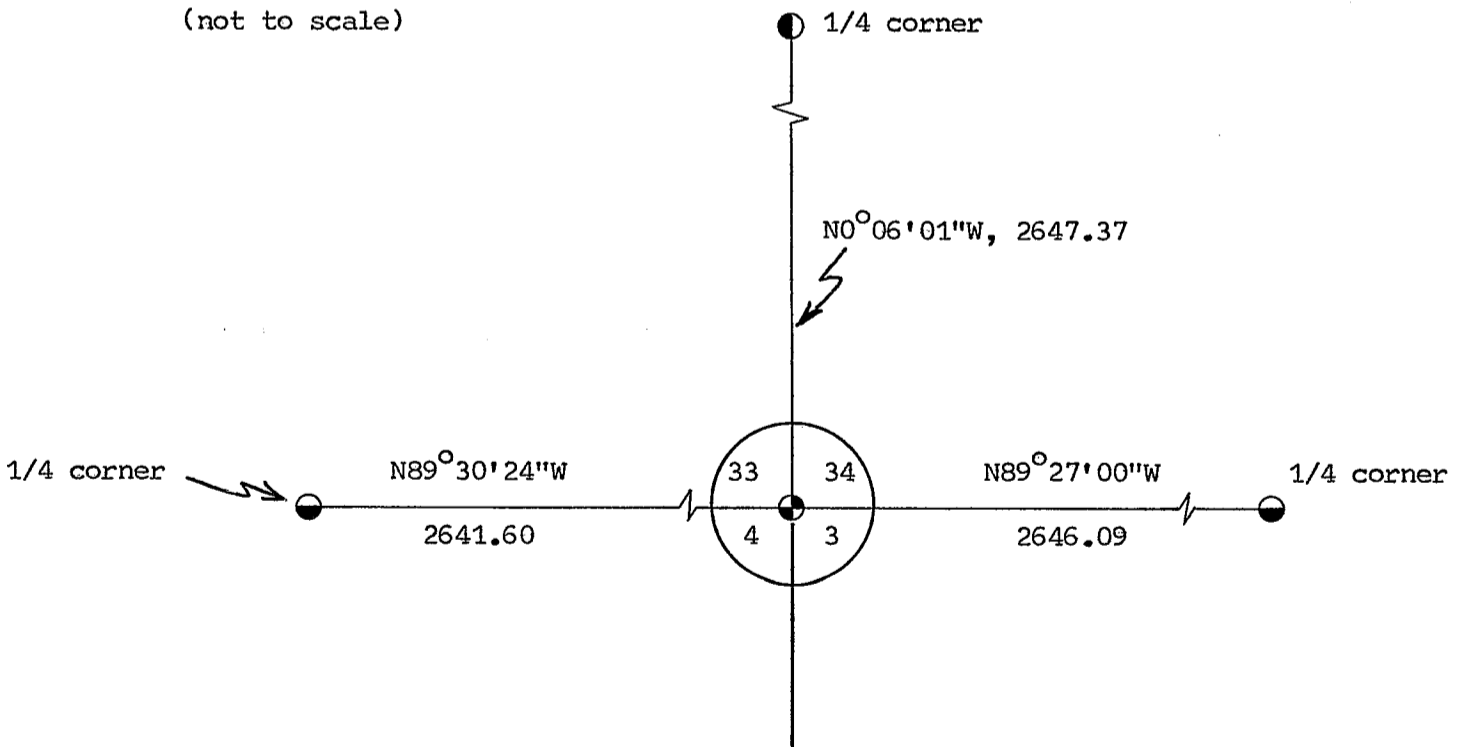
NO	DESCRIPTION	BEARING	DISTANCE
1	SET P.K. NAIL IN 20" BLACK OAK (DOUBLE BLAZED)	— — —	17.98 Ft.
2	SET P.K. NAIL IN 14" ASPEN (DOUBLE BLAZED)	— — —	SL, 49.84 Ft.
3	SET P.K. NAIL IN 18" ASPEN (DOUBLE BLAZED)	— — —	32.39 Ft.
4	SET P.K. NAIL IN 15" ASPEN (DOUBLE BLAZED)	— — —	19.80 Ft.



PLAN VIEW DRAWING OF REFERENCE TIES

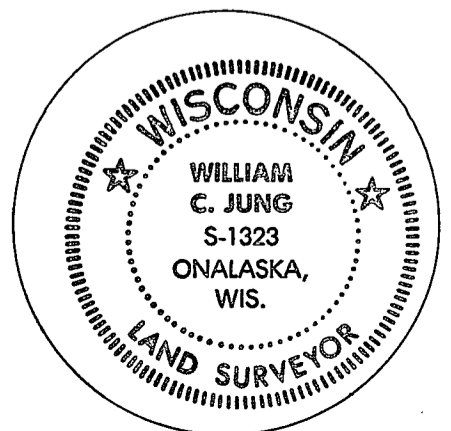
MAP SHOWING DISTANCE AND DIRECTION TO OTHER PUBLIC LAND SURVEY CORNERS USED FOR REESTABLISHING THE CORNER

(not to scale)



I, WILLIAM C. JUNG, DEPUTY COUNTY SURVEYOR,  
HEREBY CERTIFY THAT THE CORNER LOCATION SHOWN ON THIS RECORD  
WAS DETERMINED BY ME OR UNDER MY DIRECTION AND CONTROL AND  
THAT THIS U. S. PUBLIC LAND SURVEY MONUMENT RECORD IS CORRECT  
AND COMPLETE TO THE BEST OF MY KNOWLEDGE AND BELIEF.

William C. Jung Signature      2/12/88 Date



Seal