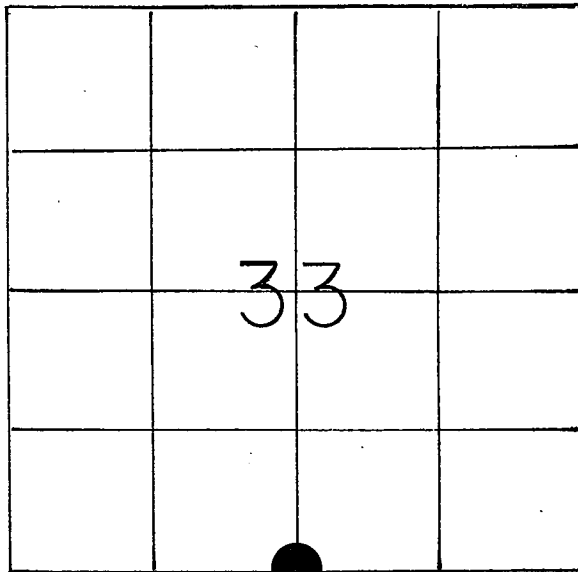


21505330020

## U. S. PUBLIC LAND SURVEY MONUMENT RECORD

SECTION 33 T 15 N, R 5 W, TOWN OF WASHINGTON

LA CROSSE COUNTY



LOCATION OF LANDMARK

CREW: WILLIAM C. JUNG  
PETER F. FOLLANSBEE

FEBRUARY 3, 1988

Describe any record evidence, monument evidence, testimonial evidence or any other material evidence you considered and whether the monument was found or restored through acceptance of an obliterated evidence location.

I accepted the old occupied 4-way fence corner as the best available evidence of the original government corner position and monumented it with a brass capped Lunde marker.

Describe or show any material discrepancy between the location of the restored corner and that of the corner previously restored or reestablished.

NONE KNOWN

WISCONSIN COORDINATE SYSTEM

North

East

Theta Angle

Horiz. Order

Vert. Order

TYPE OF LANDMARK

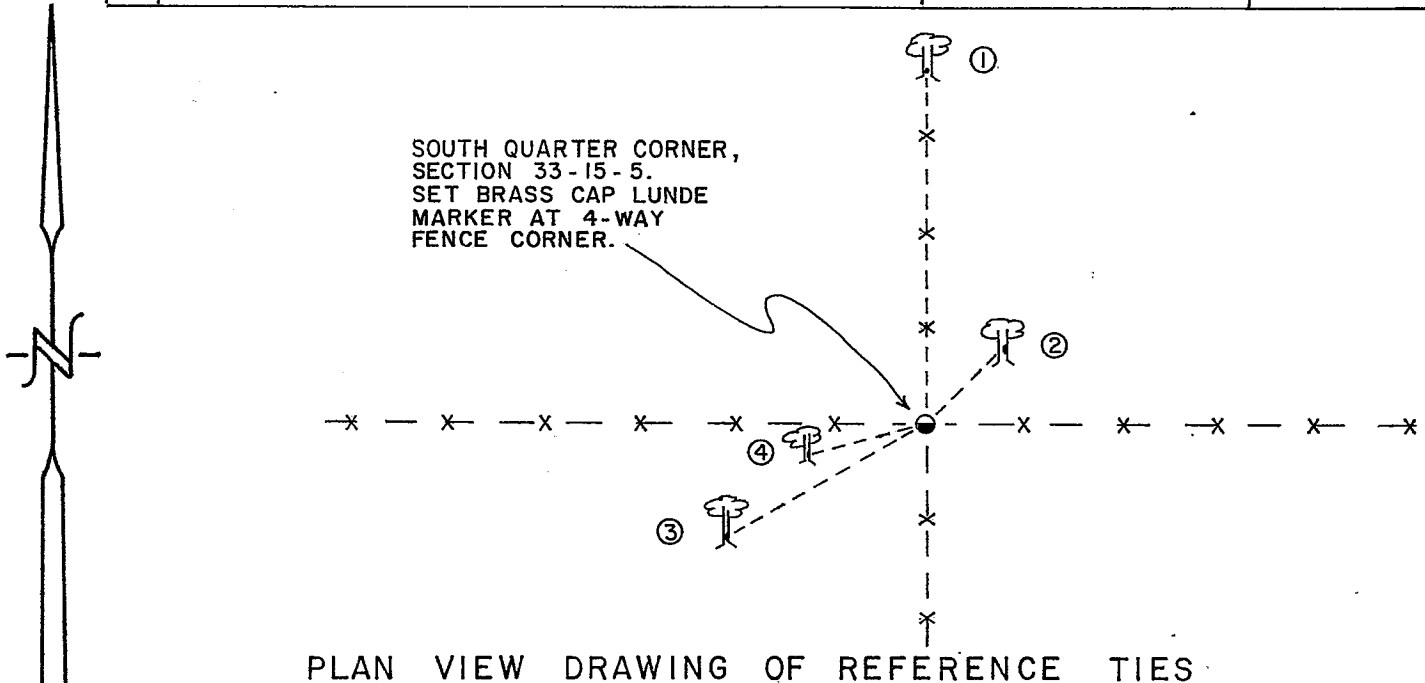
SET BRASS CAP LUNDE MARKER

BEARINGS ARE REFERENCED TO

ASSUMED

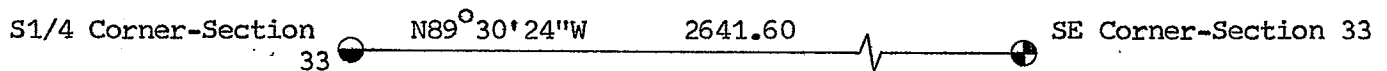
RECORD OF DURABLE WITNESS MONUMENTS

NO	DESCRIPTION	BEARING	DISTANCE
1	SET P.K. NAIL IN 16" BURR OAK (DOUBLE BLAZED)	— — —	36.70 Ft.
2	SET P.K. NAIL IN 13" BURR OAK (DOUBLE BLAZED)	— — —	10.05 Ft.
3	SET P.K. NAIL IN 10" RED OAK (DOUBLE BLAZED)	— — —	23.35 Ft.
4	SET P.K. NAIL IN 6" RED OAK (DOUBLE BLAZED)	— — —	12.42 Ft.



MAP SHOWING DISTANCE AND DIRECTION TO OTHER PUBLIC LAND SURVEY CORNERS USED FOR REESTABLISHING THE CORNER

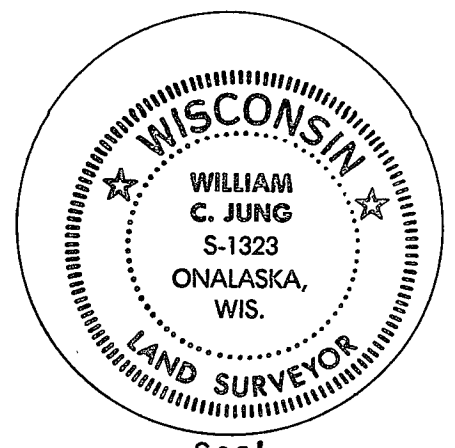
( NOT TO SCALE )



I, WILLIAM C. JUNG, DEPUTY COUNTY SURVEYOR,  
HEREBY CERTIFY THAT THE CORNER LOCATION SHOWN ON THIS RECORD  
WAS DETERMINED BY ME OR UNDER MY DIRECTION AND CONTROL AND  
THAT THIS U. S. PUBLIC LAND SURVEY MONUMENT RECORD IS CORRECT  
AND COMPLETE TO THE BEST OF MY KNOWLEDGE AND BELIEF.

William C. Jung  
Signature

2/11/88  
Date



Seal