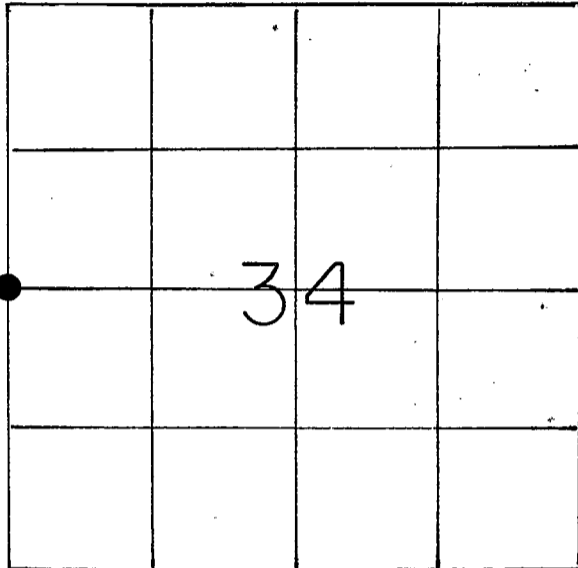


21505332000

U. S. PUBLIC LAND SURVEY MONUMENT RECORD

SECTION 34 T 15 N, R 5 W, TOWN OF Washington

LA CROSSE COUNTY



LOCATION OF LANDMARK

Crew: William C. Jung

Peter F. Follansbee

February 9, 1988 and 6/27/88

Describe any record evidence, monument evidence, testimonial evidence or any other material evidence you considered and whether the monument was found or restored through acceptance of an obliterated evidence location.

I set this corner by intersecting the West line of the section with an very old East - West line fence. The fence is "ancient" and also goes through white oaks. I accepted it as the best available evidence of the East - West direction at the 1/4 corner. The 1/2 mile to the North is shorter than that to the South, but the terrain to the North is rougher, especially where the original surveyors had to offset around a sandstone cliff. I set an iron pipe at the corner.

Describe or show any material discrepancy between the location of the restored corner and that of the corner previously restored or reestablished.

None known.

*** Revised: August 4, 1988

On 6/27/88 I removed the iron pipe and replaced it with a brass capped Lunde marker. I could not find any evidence of the original government corner. I also buried a whiskey bottle with a note by the Lunde marker.

WISCONSIN COORDINATE SYSTEM

North

East

Theta Angle

Horiz. Order

Vert. Order

TYPE OF LANDMARK

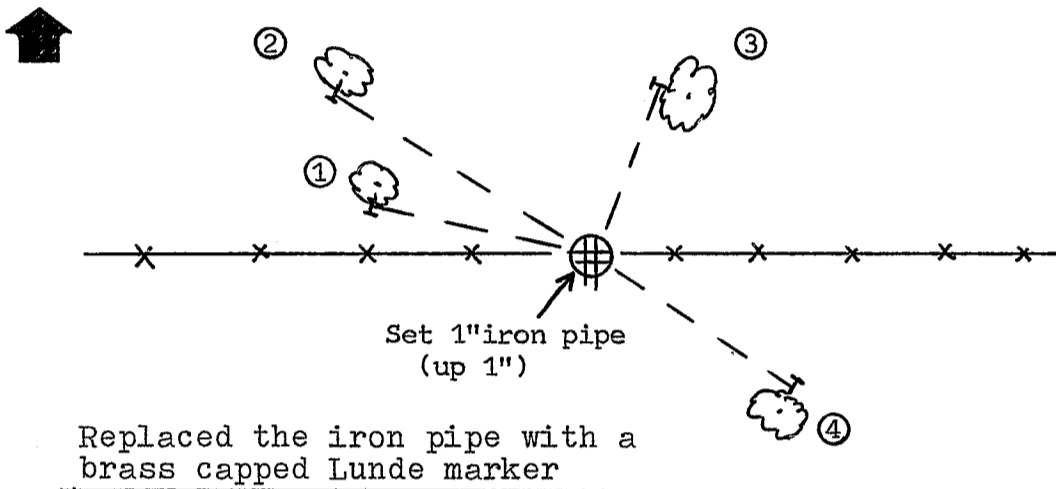
Set 1" iron pipe ***

BEARINGS ARE REFERENCED TO

Assumed

RECORD OF DURABLE WITNESS MONUMENTS
MAGNETIC

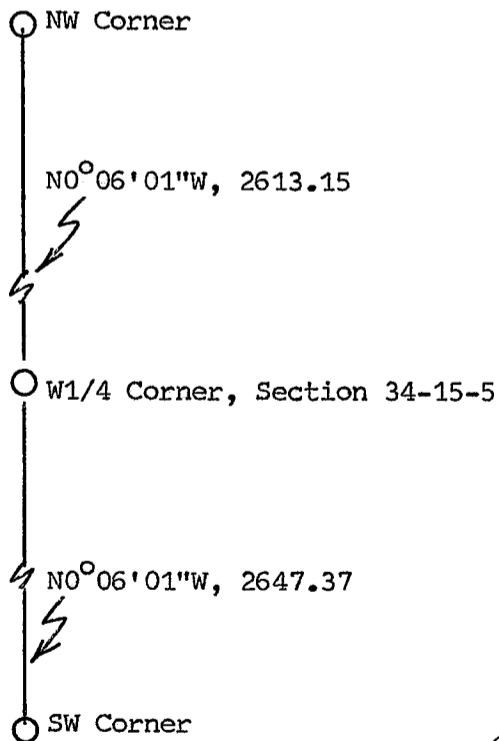
NO	DESCRIPTION	BEARING	DISTANCE
1	P.K. nail in double blazed 7" white oak	N70°W	11.23
2	P.K. nail in double blazed 5" white oak	N53°W	17.13
3	P.K. nail in double blazed 10" white oak	N18°E	4.70
4	P.K. nail in double blazed 10" hickory	S50°E	15.13



PLAN VIEW DRAWING OF REFERENCE TIES

MAP SHOWING DISTANCE AND DIRECTION TO OTHER PUBLIC LAND SURVEY CORNERS USED FOR REESTABLISHING THE CORNER

(not to scale)



I, William C. Jung, Deputy County Surveyor,
HEREBY CERTIFY THAT THE CORNER LOCATION SHOWN ON THIS RECORD
WAS DETERMINED BY ME OR UNDER MY DIRECTION AND CONTROL AND
THAT THIS U. S. PUBLIC LAND SURVEY MONUMENT RECORD IS CORRECT
AND COMPLETE TO THE BEST OF MY KNOWLEDGE AND BELIEF.

William C. Jung
Signature

2/12/88
Date



Seal