

US PUBLIC LAND SURVEY MONUMENT RECORD-ADDENDUM

TIE SHEET ADDENDUM-21505350000

SE CORNER SECTION 35

T. 15 N., R. 5 W.

TOWN OF WASHINGTON

LA CROSSE COUNTY

WISCONSIN COORDINATE SYSTEM

DATUM: SPC- WI SOUTH NAD83(91)

NORTH: 630,205.29'

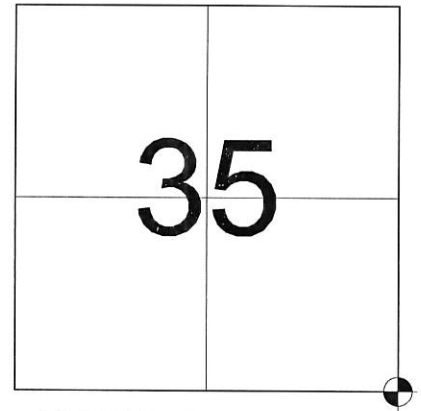
EAST: 1,722,502.85'

ELEVATION:

TYPE OF MONUMENT: LUNDE MONUMENT

CREW: BRYAN MEYER, COREY HUGHES

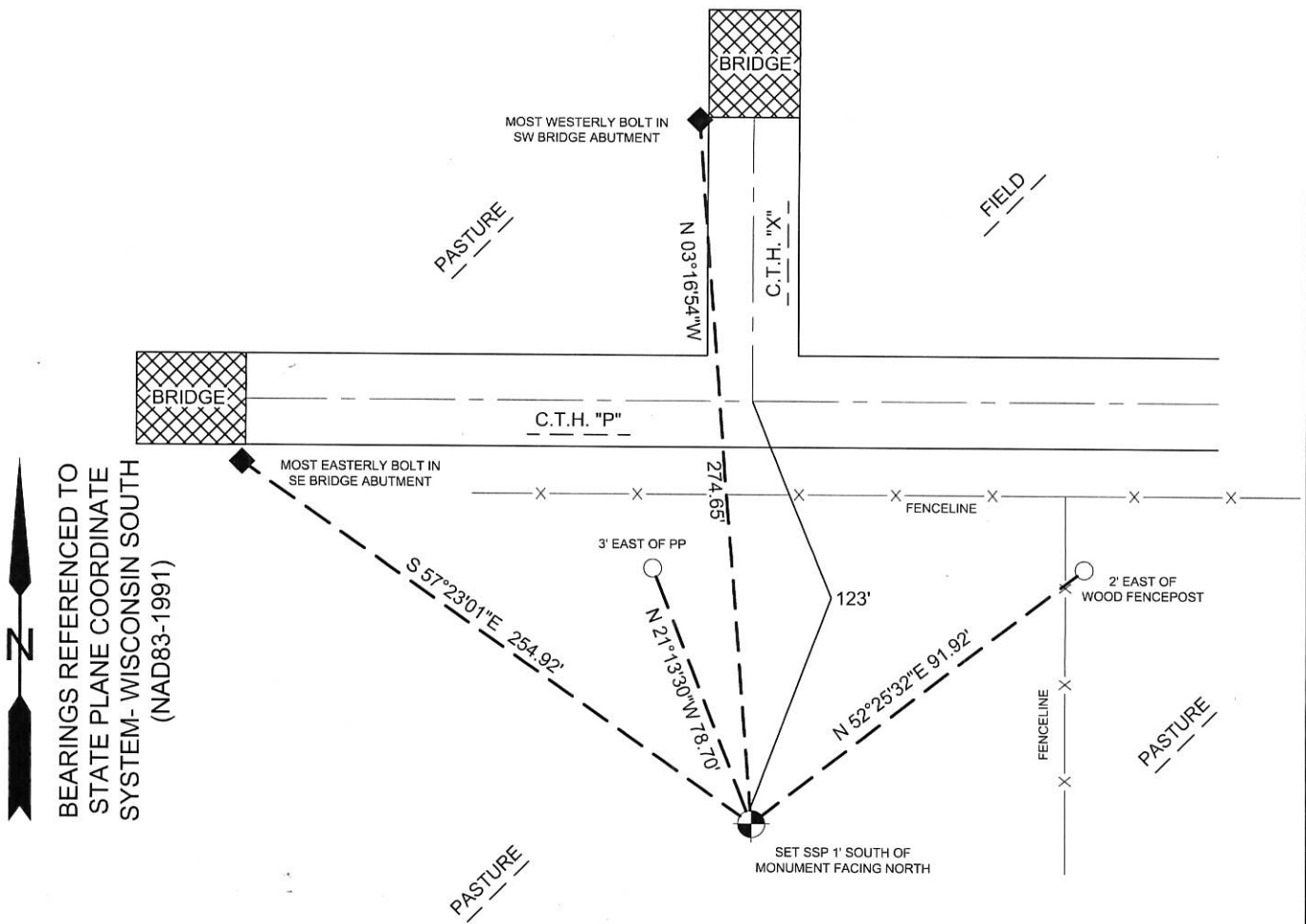
DATE: 8/30/2017



LOCATION OF LANDMARK

Describe what day the corner was visited, describe the condition of the recorded monument and ties. Followed by a description as to how the monument position was reestablished and if any new ties were set.

AUGUST 30, 2017- Bryan Meyer and I found the Lunde monument of record. The monument falls in the middle of a pasture. All ties by W. Jung were gone, I set 4 new ties as shown.



BEARINGS REFERENCED TO
STATE PLANE COORDINATE
SYSTEM- WISCONSIN SOUTH
(NAD83-1991)

LEGEND

- FOUND LUNDE MONUMENT
- SET 3/4"X18" IRON BAR (WEIGHING 1.50LBS./FT)
- BRIDGE BOLT AS NOTED



Corey Hughes
Corey M. Hughes

10-3-17
Date

I, Corey M. Hughes, Hereby certify that the corner location shown on this record was determined by me or under my direction and control and that this U.S. Public Land Survey Monument Record Addendum is correct and complete to the best of my knowledge and belief.

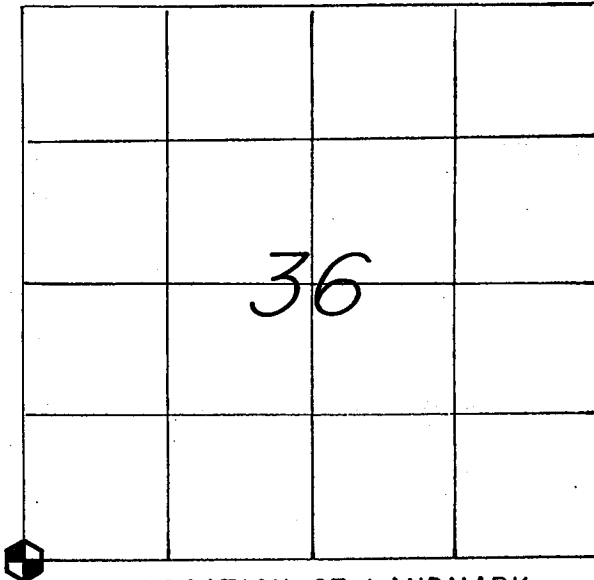
ROMPORTL ID:
21505350000

21505350000

U. S. PUBLIC LAND SURVEY MONUMENT RECORD

SECTION 36 T 15 N, R 5 W, TOWN OF WASHINGTON

LA CROSSE COUNTY



LOCATION OF LANDMARK

CREW: WILLIAM C. JUNG

PETER F. FOLLANSBEE

DATE: 12/08/1997

WISCONSIN COORDINATE SYSTEM

North

East

Theta Angle

Horiz. Order

Vert. Order

TYPE OF LANDMARK

BRASS CAP LUNDE MARKER.

BEARINGS ARE REFERENCED TO

ASSUMED NORTH.

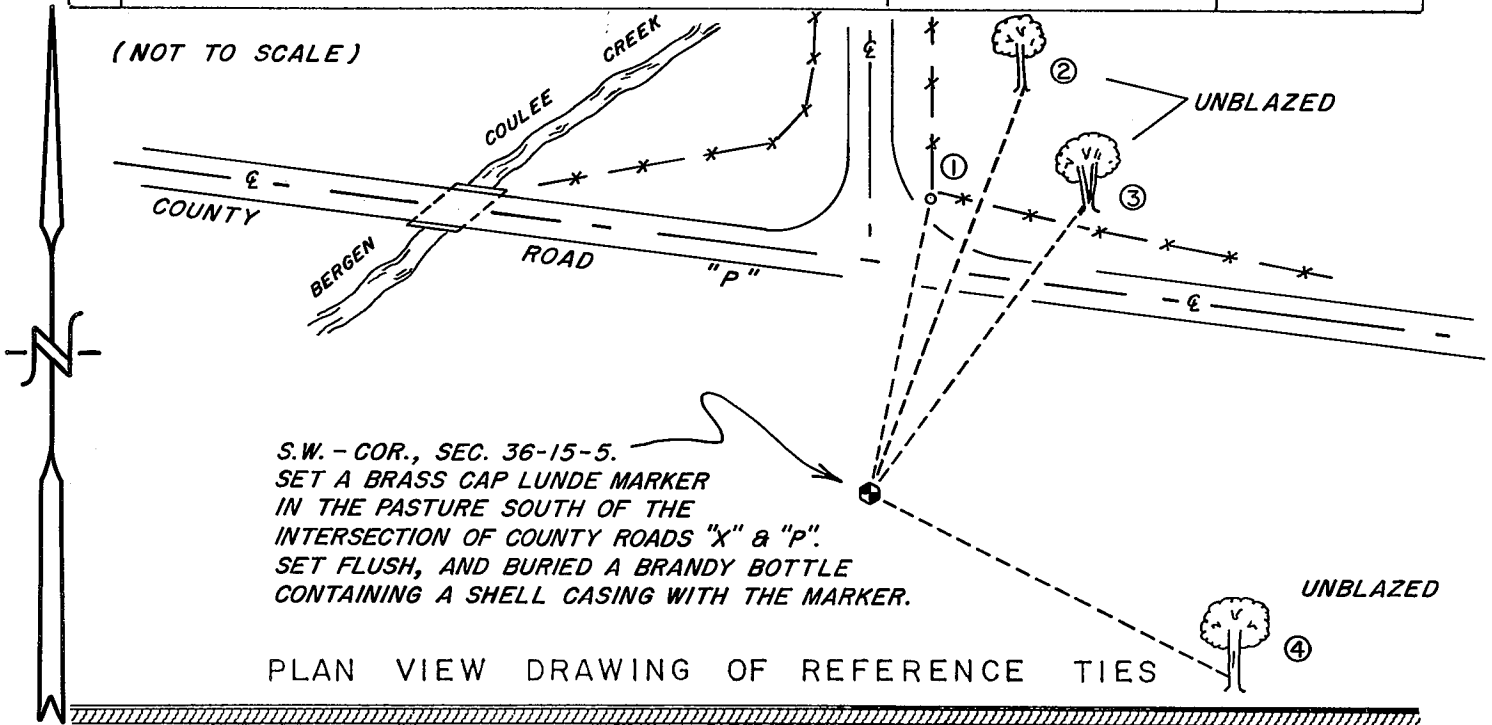
Describe any record evidence, monument evidence, testimonial evidence or any other material evidence you considered and whether the monument was found or restored through acceptance of an obliterated evidence location.

I set this corner on line with the Southeast corner of Section 36 and the Southwest corner of Section 35 and on line with centerline of "X" to the North. Bliss' 1865 notes call for the centerline to the North as being on the section line. Set as such this corner also fits very well Knower's 1883 and 1889 survey notes along the County line. The old line fences 1/4 mile West, and 1/2 mile East, and 3/8 mile North all fit this location. A Lunde was set at the corner. Describe or show any material discrepancy between the location of the restored corner and that of the corner previously restored or reestablished.

None known.

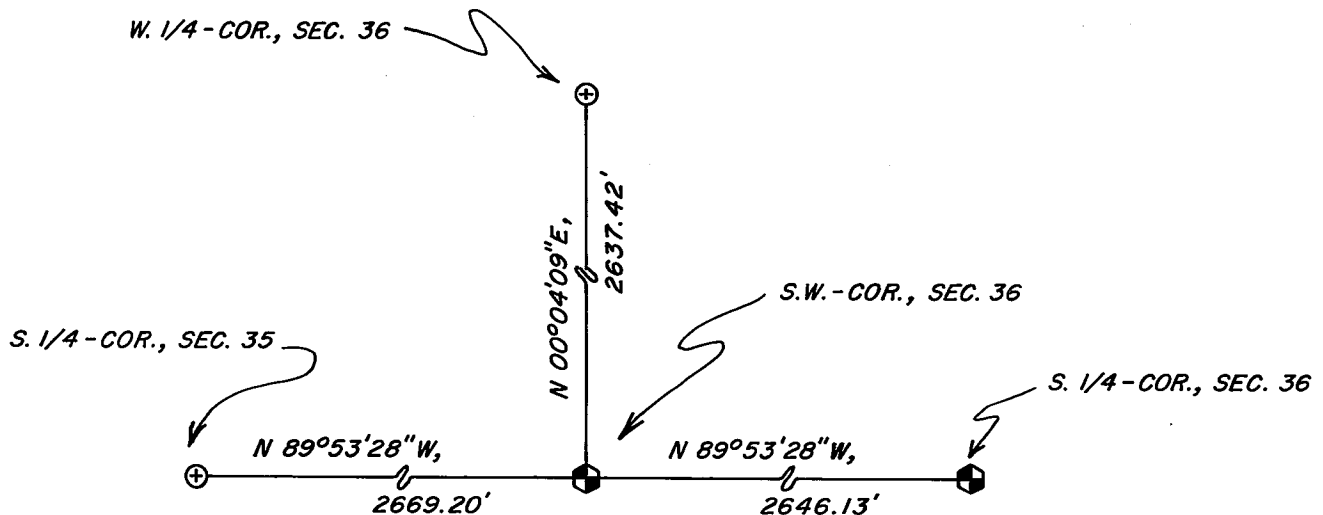
RECORD OF DURABLE WITNESS MONUMENTS
ASSUMED

NO	DESCRIPTION	BEARING	DISTANCE
1	SET 18" ROUNDHEAD BOLT 19"s S.'WEST OF ANGLE IRON FENCEPOST	N 11°27'15"E	157.51 FT.
2	SET A P.K. NAIL IN E-SIDE 24" BURR OAK (UNBLAZED)	N 20°40'54"E	229.39 FT.
3	SET A P.K. NAIL IN THE ROOT ON W-SIDE DOUBLE BURR OAK	N 36°17'57"E	186.41 FT.
4	SET A P.K. NAIL IN S.W.-SIDE OF A LARGE DYING WHITE OAK	S 63°14'06"E	210.55 FT.



MAP SHOWING DISTANCE AND DIRECTION TO OTHER PUBLIC LAND SURVEY CORNERS USED FOR REESTABLISHING THE CORNER

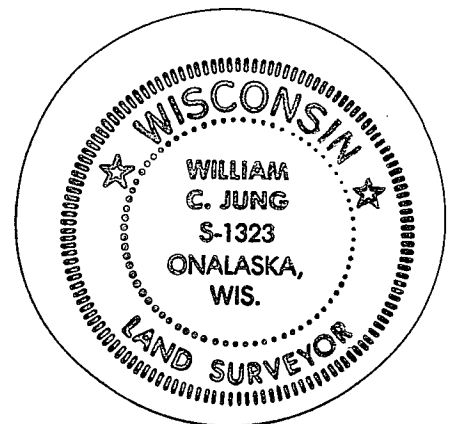
(not to scale)



I, WILLIAM C. JUNG, COUNTY SURVEYOR
HEREBY CERTIFY THAT THE CORNER LOCATION SHOWN ON THIS RECORD
WAS DETERMINED BY ME OR UNDER MY DIRECTION AND CONTROL AND
THAT THIS U. S. PUBLIC LAND SURVEY MONUMENT RECORD IS CORRECT
AND COMPLETE TO THE BEST OF MY KNOWLEDGE AND BELIEF.

William C. Jung
Signature

March 20, 1998
Date



Seal