

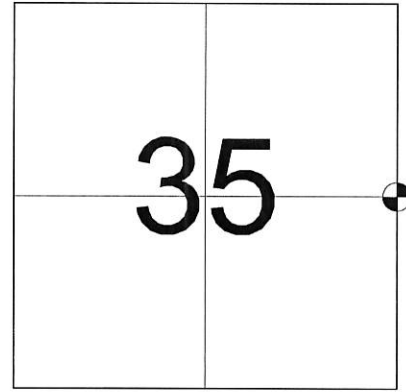
US PUBLIC LAND SURVEY MONUMENT RECORD-ADDENDUM

TIE SHEET ADDENDUM-21505352000

EAST 1/4 SECTION 35 T. 15 N., R. 5 W. TOWN OF WASHINGTON
LA CROSSE COUNTY

WISCONSIN COORDINATE SYSTEM

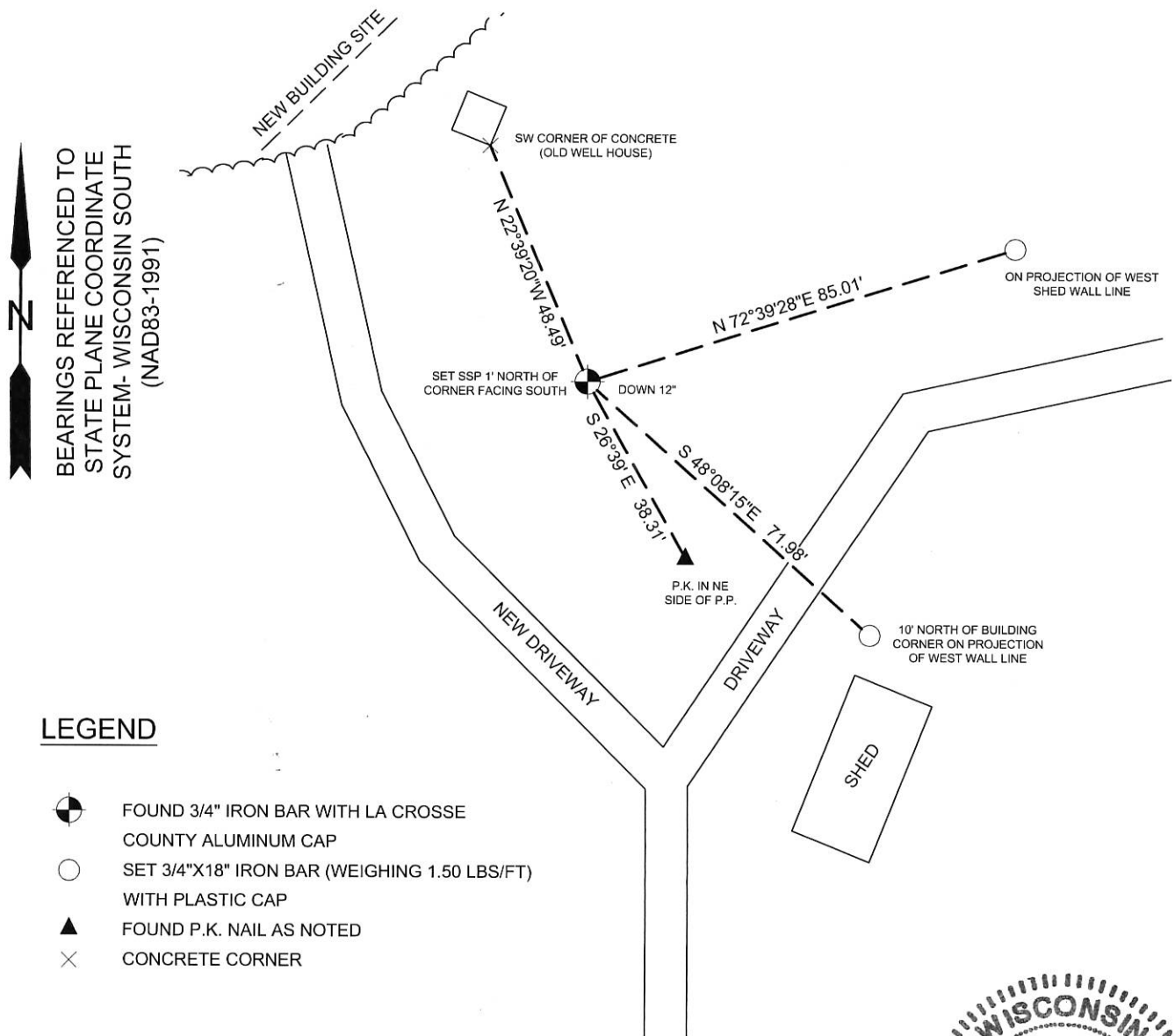
DATUM: SPC- WI SOUTH NAD83(91)
NORTH: 632,842.46'
EAST: 1,722,514.37'
ELEVATION:
TYPE OF MONUMENT: 3/4"x18" Iron Bar with Aluminum Cap
CREW: BRYAN MEYER, COREY HUGHES
DATE: 8/30/2017



LOCATION OF LANDMARK

Describe what day the corner was visited, describe the condition of the recorded monument and ties. Followed by a description as to how the monument position was reestablished and if any new ties were set.

AUGUST 30, 2017- Bryan Meyer and I found the 3/4" Iron bar with Aluminum cap down 12" in old pasture. The area north and west of the monument has been graded in preparation for a new house. 2 ties by W. Jung were gone, I set 2 new ties as shown.



BEARINGS REFERENCED TO
STATE PLANE COORDINATE
SYSTEM- WISCONSIN SOUTH
(NAD83-1991)

LEGEND

- ⊗ FOUND 3/4" IRON BAR WITH LA CROSSE COUNTY ALUMINUM CAP
- SET 3/4"X18" IRON BAR (WEIGHING 1.50 LBS/FT) WITH PLASTIC CAP
- ▲ FOUND P.K. NAIL AS NOTED
- × CONCRETE CORNER



Corey Hughes

Corey M. Hughes

10-3-17
Date

I, Corey M. Hughes, Hereby certify that the corner location shown on this record was determined by me or under my direction and control and that this U.S. Public Land Survey Monument Record Addendum is correct and complete to the best of my knowledge and belief.

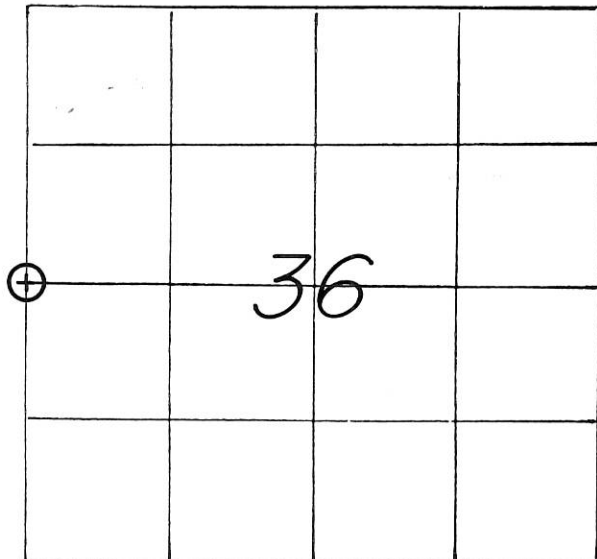
ROMPORTL ID:
21505352000

21505352000

U. S. PUBLIC LAND SURVEY MONUMENT RECORD

SECTION 36 T 15 N, R 5 W, TOWN OF WASHINGTON

LA CROSSE COUNTY



LOCATION OF LANDMARK

CREW: WILLIAM C. JUNG
 PETER F. FOLLANSBEE
 DATE: 1/20/1998.

WISCONSIN COORDINATE SYSTEM
North
East
Theta Angle
Horiz. Order
Vert. Order
TYPE OF LANDMARK
IRON BAR WITH ALUMINUM CAP
BEARINGS ARE REFERENCED TO
ASSUMED NORTH.

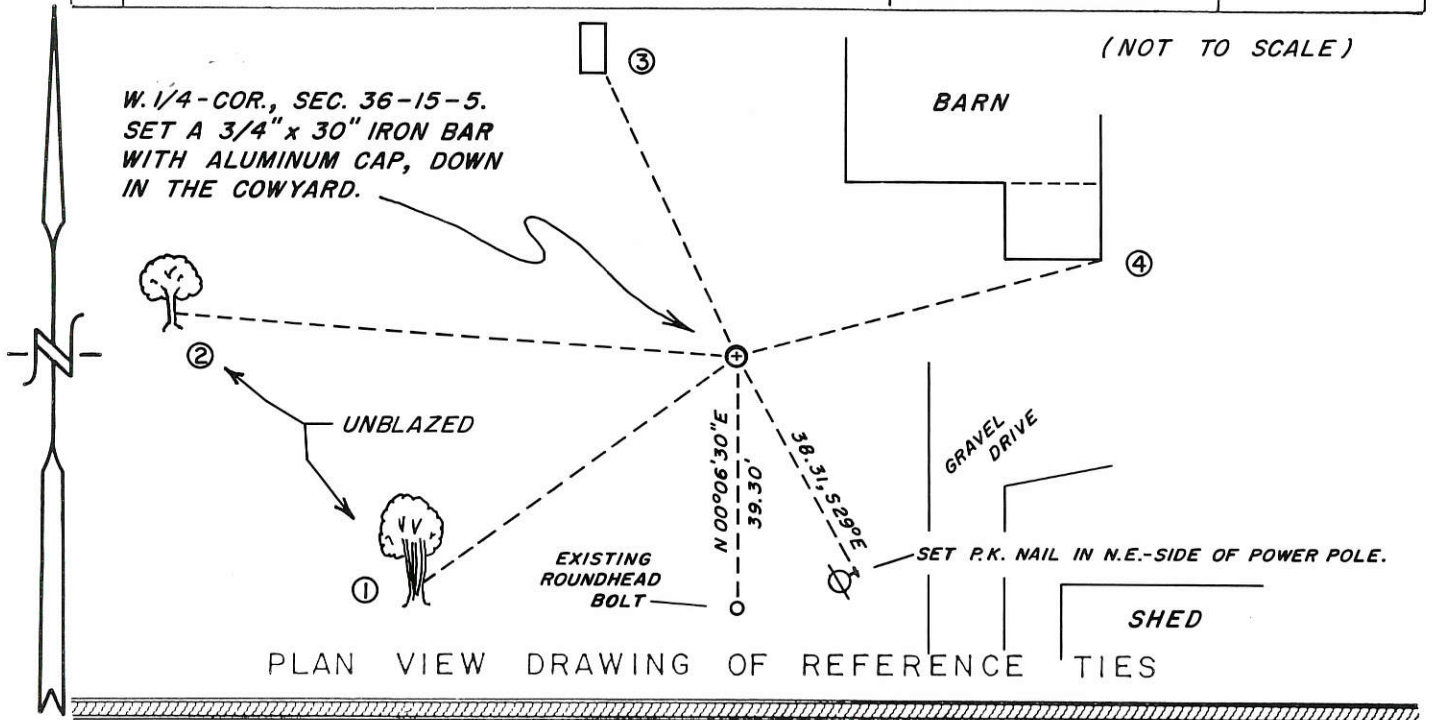
Describe any record evidence, monument evidence, testimonial evidence or any other material evidence you considered and whether the monument was found or restored through acceptance of an obliterated evidence location.
 I set an iron bar with a cap at a computed location to be explained as follows:
 While surveying out Section 36, I measured or tied into a great deal of field evidence. As Bliss' 1865 notes call for the centerline of "X" to the South as being on the section line, I set the corner on line with the centerline and at a location that best fits the section evidence. The 1/2 mile to the North is shorter than the 1/2 mile to the South, but given the terrain, that would or could be expected. The 1/2 mile to the South should be close to a "true" 1/2 mile and Describe or show any material discrepancy between the location of the restored corner and that of the corner previously restored or reestablished. it is.

None known.

RECORD OF DURABLE WITNESS MONUMENTS

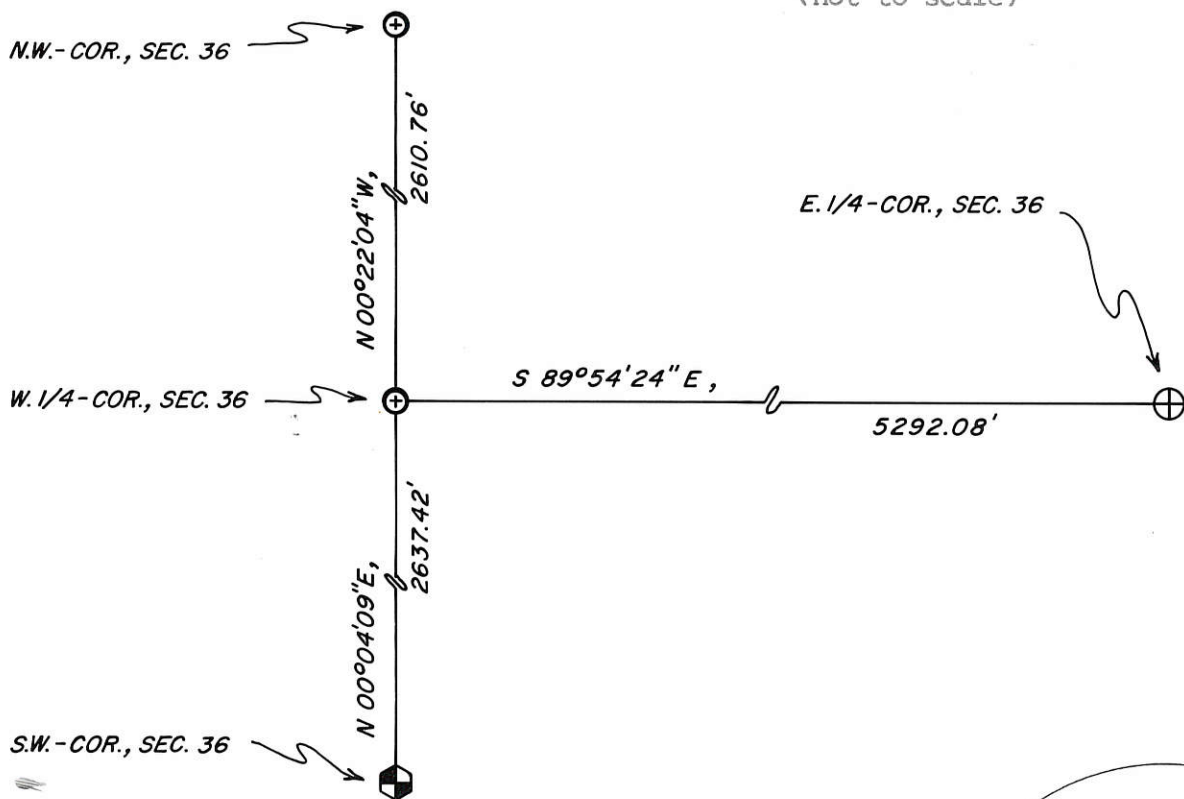
MAGNETIC

NO	DESCRIPTION	BEARING	DISTANCE
1	SET A NAIL IN THE N.W.-SIDE TRIPLE TRUNK MAPLE	S 54° W	60.79 FT.
2	SET A NAIL IN THE N.-SIDE SMALL APPLE TREE	N 86° W	87.75 FT.
3	S.E.-COR. ON CONCRETE OF SMALL WELL HOUSE	N 25° W	48.49 FT.
4	S.E.-COR. ON CONCRETE OF ADDITION TO THE BARN	N 75° E	58.83 FT.



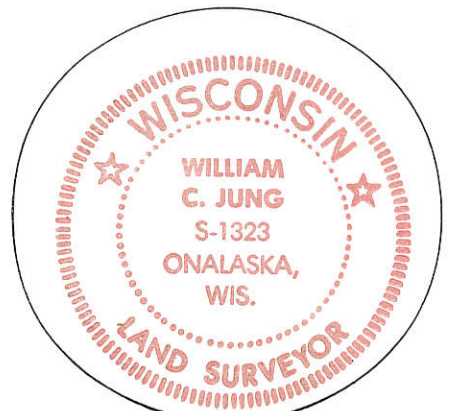
MAP SHOWING DISTANCE AND DIRECTION TO OTHER PUBLIC LAND SURVEY CORNERS USED FOR REESTABLISHING THE CORNER

(not to scale)



I, WILLIAM C. JUNG, COUNTY SURVEYOR
 HEREBY CERTIFY THAT THE CORNER LOCATION SHOWN ON THIS RECORD WAS DETERMINED BY ME OR UNDER MY DIRECTION AND CONTROL AND THAT THIS U. S. PUBLIC LAND SURVEY MONUMENT RECORD IS CORRECT AND COMPLETE TO THE BEST OF MY KNOWLEDGE AND BELIEF.

William C. Jung March 10, 1998
 Signature Date



Seal