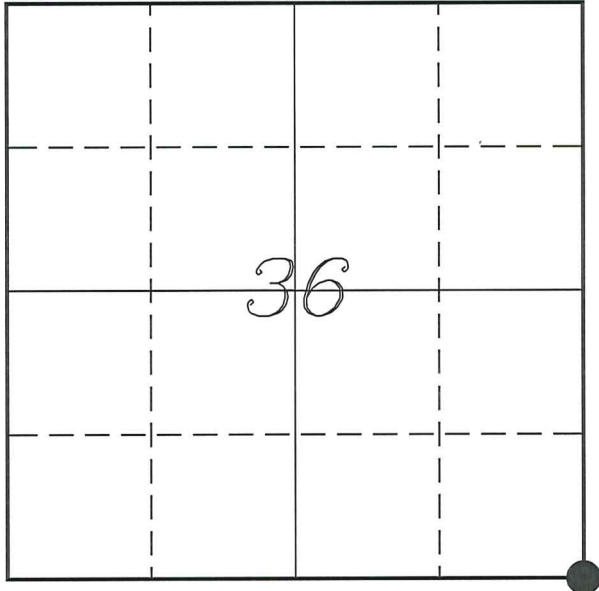


U. S. PUBLIC LAND SURVEY MONUMENT RECORD

SECTION 36, T15N, R5W

LA CROSSE, MONROE, VERNON COUNTY, WISCONSIN



LOCATION OF LANDMARK

VERNON COUNTY COORDINATE SYSTEM	
Northing	210786.894
Easting	696342.487
MONROE COUNTY COORDINATE SYSTEM	
Northing	299998.560
Easting	599890.082
STATE PLANE (SOUTH) COORDINATE SYSTEM	
Northing	630178.630
Easting	1727784.049
Datum	NAD 1983 (2011)
TYPE OF LANDMARK:	
Existing Harrison Monument	
BEARINGS ARE REFERENCED TO:	
Vernon County Coordinates (Survey Grade)	

Witnesses: Laurence E Johns III

Date: 27 March 2020

To Convert Bearings  
 Monroe County +00°05'56"  
 State Plane (South) +00°32'16"

Describe or show any material discrepancy between the location of the restored corner and that of the corner previously restored or re-established.

Uriah Biggs established this corner in October 1845.

I F Thorp was at this corner, in November 1867, during a survey of a highway centerline along the county line. He started his survey at this corner, but does not mention a monument.

Wm knower was at this corner, in April 1889, during a survey in Section 1. He shows this as a government corner and has a land owners affidavit stating there was a witness tree near this location.

Bryan Meyer was at this corner, in March 1998. He shows he set a Harrison Monument based on computed location from F Curtis Crook survey work.

Jessica Zamor was at this corner, in June 2007, during a survey in Sections 1 & 6. She shows she found a cast iron monument.

Curtis Cummer was at this corner, in September 2006 & July 2009, during surveys in Section 1. He shows he found a Harrison monument.

I was at this corner, in July 2017, during a survey in Section 31. I show I found a Harrison monument.

Describe any record evidence, monument evidence, testimonial evidence or any other material evidence you considered and whether the monument was found or restored through acceptance of an obliterated evidence location.

No bearing trees of record were located.

I did not find a record of a survey by Crook, that was used for the computation of the location by Meyer.

I found the Harrison monument broke off at about 6" below the surface of a plowed crop field. It was still upright and measurements to existing ties indicate it has not be disturbed.

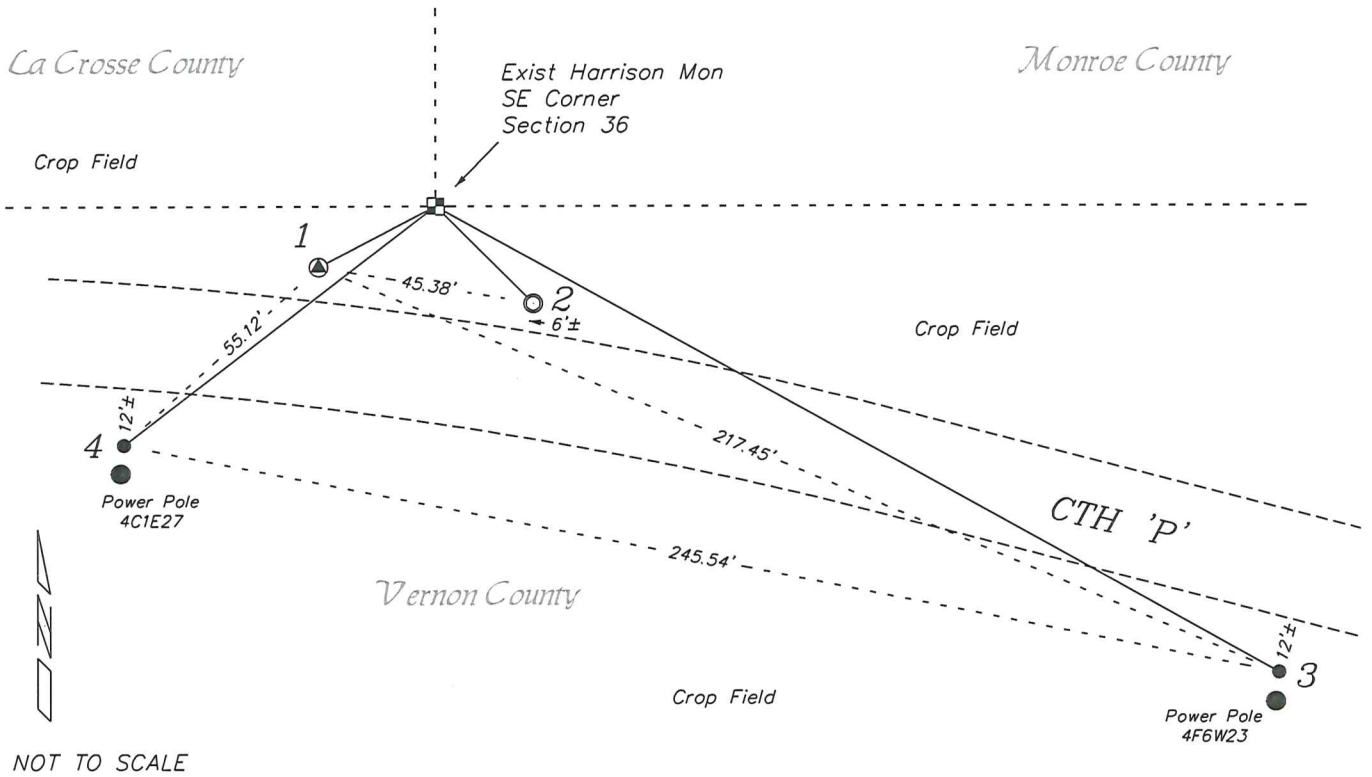
I found no reason or evidence to dispute the location of the monument and accepted it as representing the original government corner.

I set two new ties and referenced them as shown.

I determined there was no reason to replace the broken Harrison monument, it was very stable and it has not be disturbed.

# RECORD OF DURABLE WITNESS MONUMENTS

NO	DESCRIPTION	BEARING	DISTANCE
1	GPS Monument Washington SE GPS	S 62°31'03" W (S 62° W)	27.54' (27.64')
2	Existing 1" Iron Pipe Shown on Meyer Tie Sheet	S 44°59'45" E (S 46° E)	28.72' (28.71')
3	Set 3/4" x 18" Iron Rod 3' North of Power Pole 4F6W23	S 61°00'00" E	201.03'
4	Set 3/4" x 18" Iron Rod 3' North of Power Pole 4C1E27	S 52°30'01" W	82.03'

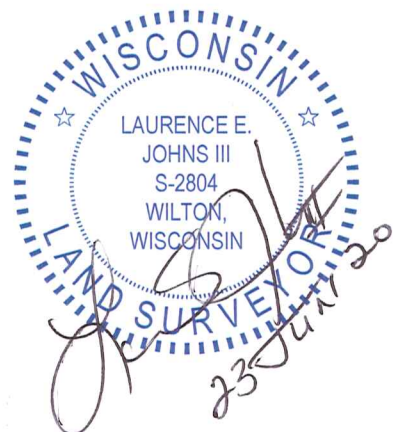


## PLAN VIEW DRAWING OF REFERENCE TIES

Map Showing Distance And Direction To Other Public Land Survey Corners Used For Re-Establishing The Corner

None at this time.

I, Laurence E Johns III PLS 2804, Professional Land Surveyor, hereby certify that the corner location shown on this record was determined by me or under my direction and control, and that this U.S. Public Land Survey Monument Record is correct and complete to the best of my knowledge and belief.



CERTIFICATE

CERTIFIED LAND CORNER

SE-36-15-5

#157  
No. 133

21505360000

History of corner establishment since Original Government Survey

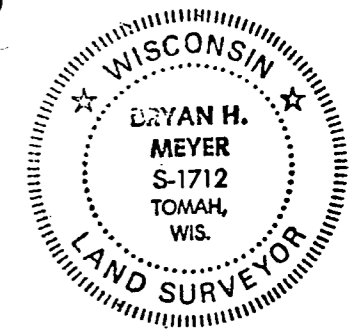
No recorded history for this corner was found in the LaCrosse, Vernon or Monroe County records. F. Curtis Crook, Registered Land Surveyor from Readstown informed the Monroe County Surveyor's Office that he had completed some survey work in this area and had established a computed location for this corner.  
Description of corner evidence found:

I set this corner at Mr. Crook's computed location using his traverse points. I spoke with Mr. William Jung, LaCrosse County Surveyor and Mr. Gary Sime, Monroe County surveyor and both agreed with me that this was a good location for this corner.

I, Bryan H. Meyer, do hereby certify that on the 18th day of November 1997, I found ~~evidence~~ (no evidence) of the Southwest corner of Section 31, T 15 N, R 4 W Fourth Principal Meridian, and I re-established said corner according to the Wisconsin Statutes as shown and described hereon.

Dated this 30th day of March 1998.

Bryan H. Meyer  
Deputy County Surveyor  
Title



Bryan H. Meyer  
H. A. Sime and Associates  
P. O. Box 50  
Tomah, Wisconsin 54660  
Phone: (608)-372-5392

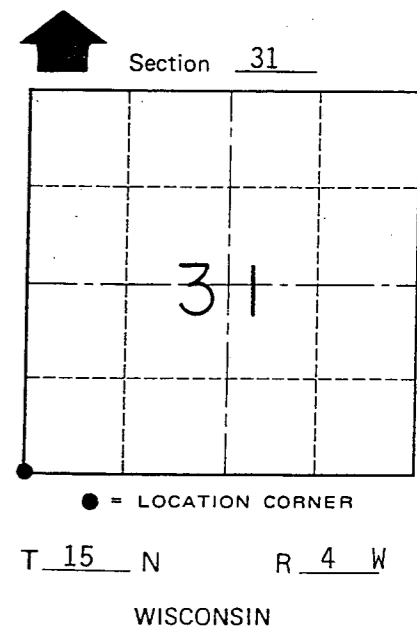
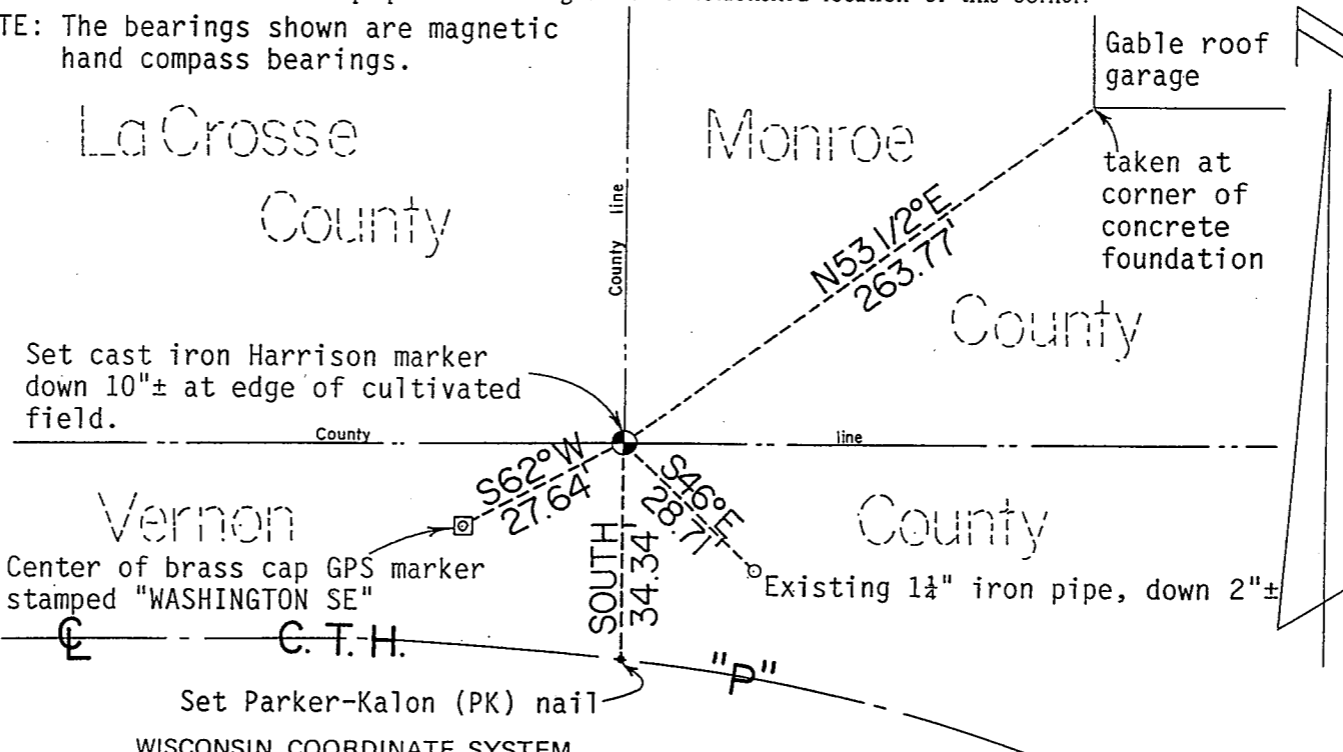
Description of corner and witness monuments, references and accessories used to perpetuate the original or re-established location of this corner:

Date: November 18, 1997 - 11:00 am NOTE: The bearings shown are magnetic  
Weather: Clear, calm, 30°±

Witnesses to corner location:

Bryan H. Meyer

Douglas J. Malliet



COUNTY SURVEYOR FORM NO. 1

No. 157  
215051360000

SURVEY CONTROL ORDER

Horizontal	_____
Vertical	_____

Corner	East (X)	North (Y)	Elevation (Z)	Zone
Control Sta. Name				

City, Village or Town of Portland  
County of Monroe