

CERTIFICATE

I, Bryan H. Meyer, do hereby certify that on the Nineteenth day of November 19 97, I found (evidence) of the West Quarter corner of Section 31, T 15 N, R 4 W Fourth Principal Meridian, and I re-established said corner according to the Wisconsin Statutes as shown and described hereon.

Dated this 19th day of Jan. 19 98.

Bryan H. Meyer Deputy County Surveyor Registered Land Surveyor #1712

CERTIFIED LAND CORNER E. 1/4-COR., 36-15-5.

History of corner establishment since Original Government Survey

21505362000

F. Curtis Crooks, Registered Land Surveyor from Readstown, informed the Monroe County Surveyor's Office that he had completed some survey work in this area. As part of this work, he set a large spike at a two-way fence corner and accepted this location as the West 1/4 corner.

Description of corner evidence found:

I found Mr. Crook's large spike at the two-way fence corner (fences East and South) and replaced said spike with a cast iron County marker.

Description of corner and witness monuments, references and accessories used to perpetuate the original or re-established location of this corner: Crew: Meyer, Malliet Date: November 19, 1997 - 9:30 a. m. Weather: Clear, 25°± Witnesses to corner location:

Bryan H. Meyer

Douglas J. Malliet

SURVEY CONTROL ORDER

Table with columns: Horizontal, Vertical, Corner, Control Sta. Name, East (X), North (Y), Elevation (Z), Zone

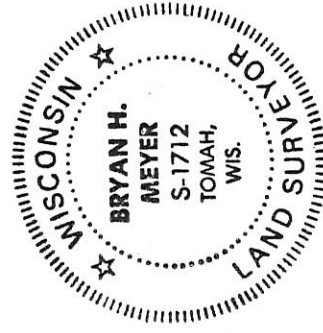
Trees have spikes set in hacks in the side of each tree and to which distances are measured.

Bearings are referenced to Magnetic North.

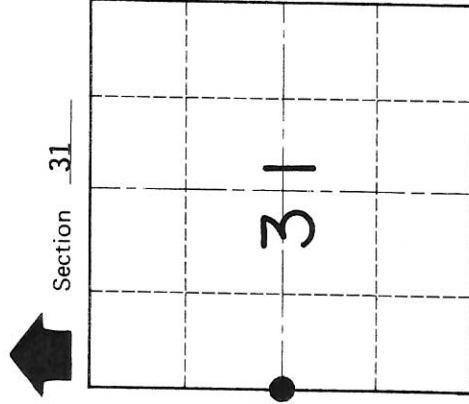
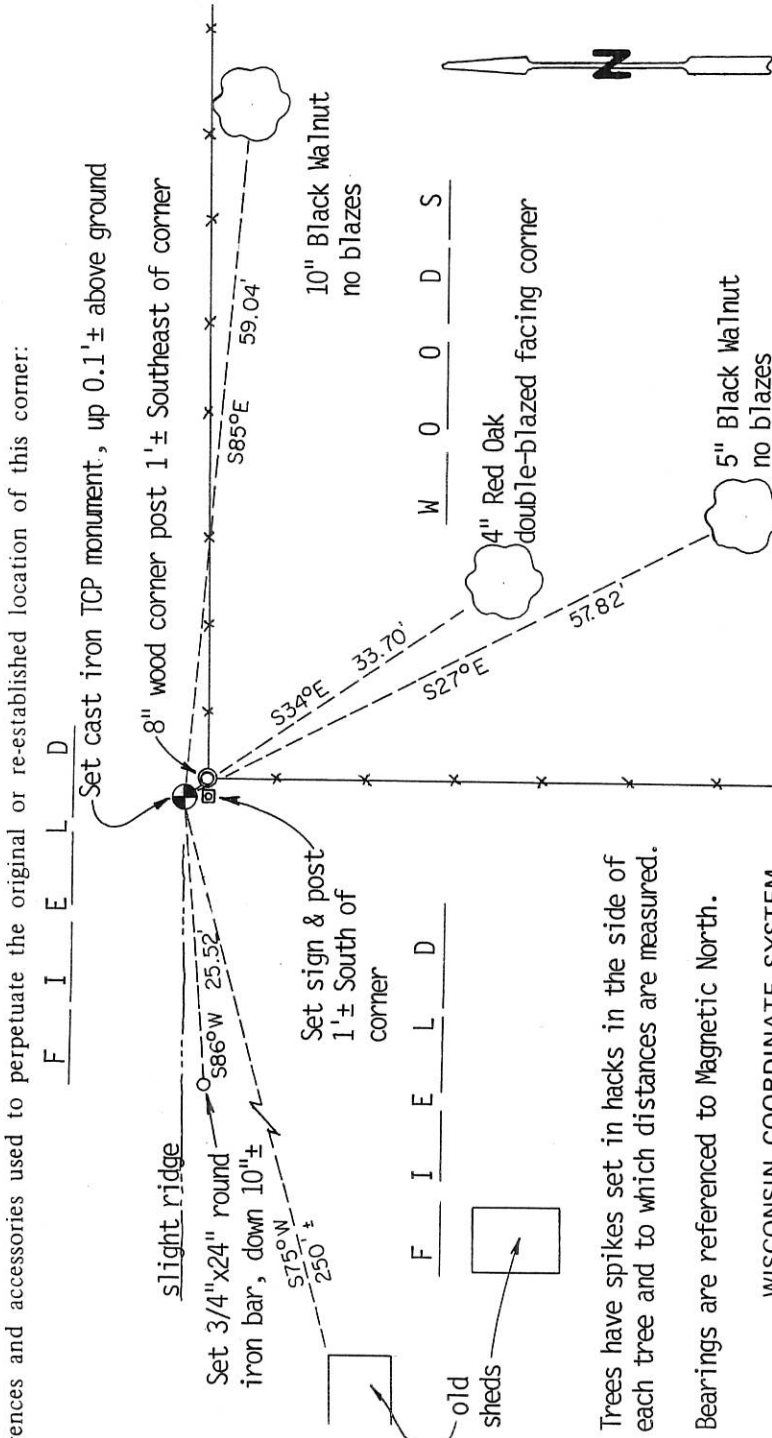
WISCONSIN COORDINATE SYSTEM

Portland Town

County of Monroe



Bryan H. Meyer H. A. Sime and Associates P. O. Box 50 Tomah, Wisconsin 54660 Phone: (608)-372-5392



T 15 N R 4 W WISCONSIN LOCATION CORNER

21505362000

NO. 156

COUNTY SURVEYOR FORM NO. 1

#(56

No. 114