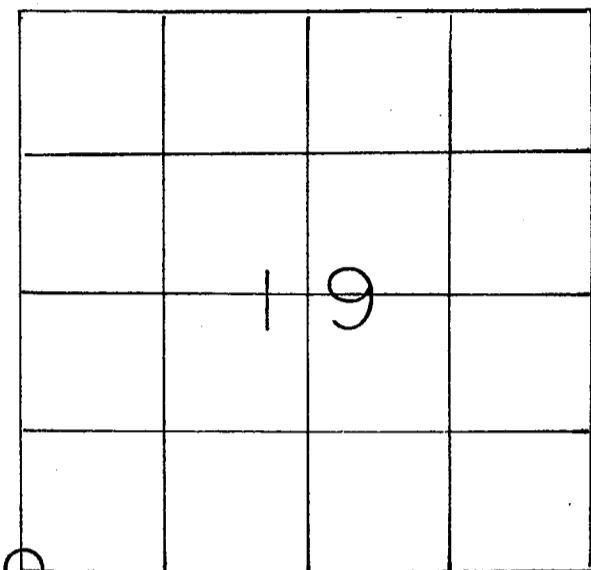


U. S. PUBLIC LAND SURVEY MONUMENT RECORD

SECTION 19 T 15 N, R 5 W, TOWN OF WASHINGTON
 LA CROSSE COUNTY



LOCATION OF LANDMARK

Crew: WILLIAM C. JUNG
 PETER F. FOLLANSBEE
 Date: 4/28/1997

Describe any record evidence, monument evidence, testimonial evidence or any other material evidence you considered and whether the monument was found or restored through acceptance of an obliterated evidence location.

This corner was set on line with the old line fence to the North and proportionately between the W1/4 of Section 19 and the SW of Section 30.

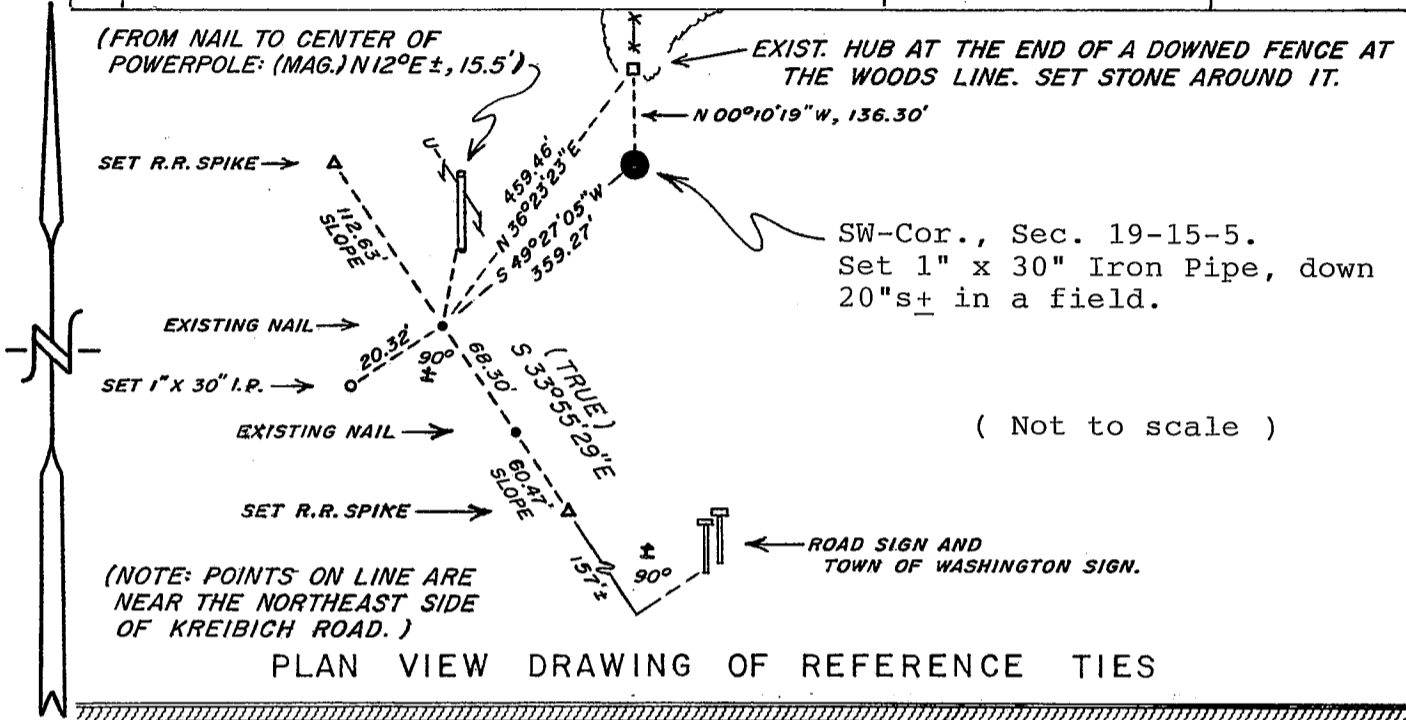
Describe or show any material discrepancy between the location of the restored corner and that of the corner previously restored or reestablished.

This corner is very close to Berg's computed corner from 1980 but probably not right at it. Also, Rob Lampman may have had an iron pipe at this corner, but I could not find it.

WISCONSIN COORDINATE SYSTEM
North
East
Theta Angle
Horiz. Order
Vert. Order
TYPE OF LANDMARK
1" x 30" IRON PIPE.
BEARINGS ARE REFERENCED TO
TRUE NORTH.

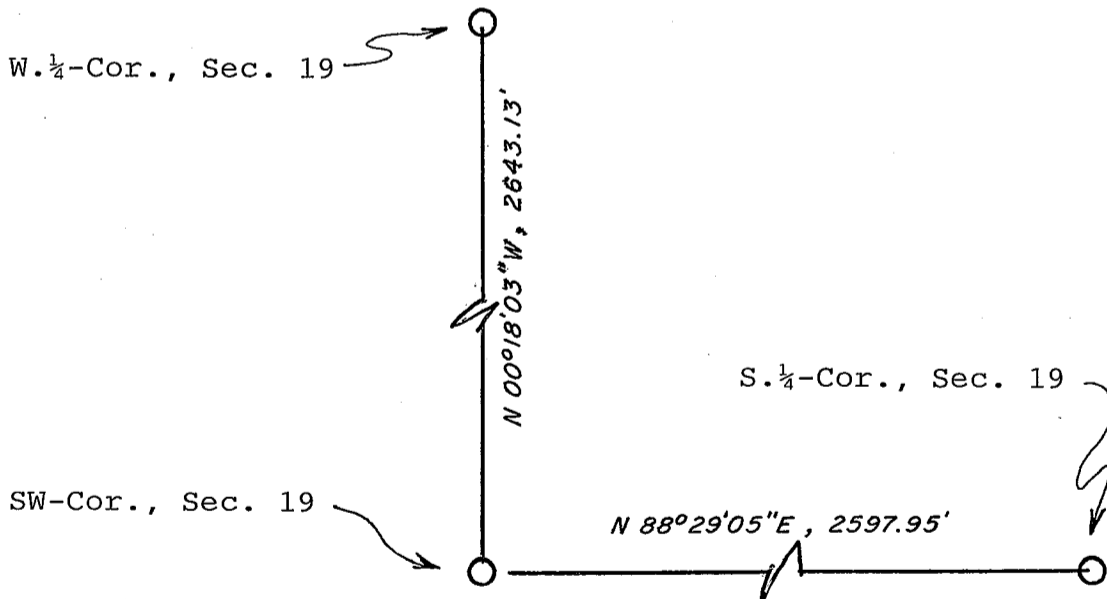
RECORD OF DURABLE WITNESS MONUMENTS

NO	DESCRIPTION	BEARING	DISTANCE
1			
2			
3			
4			



MAP SHOWING DISTANCE AND DIRECTION TO OTHER PUBLIC LAND SURVEY CORNERS USED FOR REESTABLISHING THE CORNER

(not to scale)



I, William C. Jung, County Surveyor
 HEREBY CERTIFY THAT THE CORNER LOCATION SHOWN ON THIS RECORD
 WAS DETERMINED BY ME OR UNDER MY DIRECTION AND CONTROL AND
 THAT THIS U. S. PUBLIC LAND SURVEY MONUMENT RECORD IS CORRECT
 AND COMPLETE TO THE BEST OF MY KNOWLEDGE AND BELIEF.

William C. Jung 1/13/98
 Signature Date



Seal